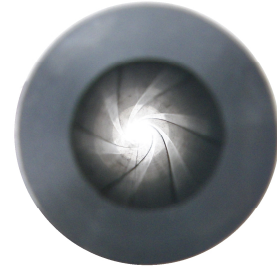


RIFLED TUBING

INFORMATION SHEET



Product Description

The rifled tubing supplied by Atomic Rifling & Creative Operations LLC consists of standard DOM (Drawn-Over-Mandrel) tubing through which a rifling button has been driven to produce a set of spiral grooves down the inside of the tube. The tubing used has an outer diameter of $\frac{7}{8}$ of an inch and a wall thickness of $\frac{3}{16}$ of an inch, giving it a nominal bore diameter of 0.500 inches, and is typically type 1020 low-carbon steel. Rifling patterns may vary slightly from one tube to another, but a 6-groove pattern with relatively wide lands and narrow grooves is most typical.

Usage Information

Rifled tubing has a wide range of potential uses in a variety of different applications. Although Atomic Rifling & Creative Operations LLC does not make any official recommendations as to its end use, and does not guarantee its suitability for any particular purpose, the favorite use of rifled tubing among customers is for making gun barrels. It has been used successfully in the production of custom muzzle loaders, which were typically loaded with lead projectiles ranging from 0.495 to 0.505 inches in diameter: A larger projectile provides a tighter and more precise fit to the bore, engaging the rifling better and usually providing better accuracy, but requiring the gun to be cleaned more frequently; a smaller projectile is easier to ram down the barrel when loading, particularly when powder fouling is present in the barrel from previous shots.

